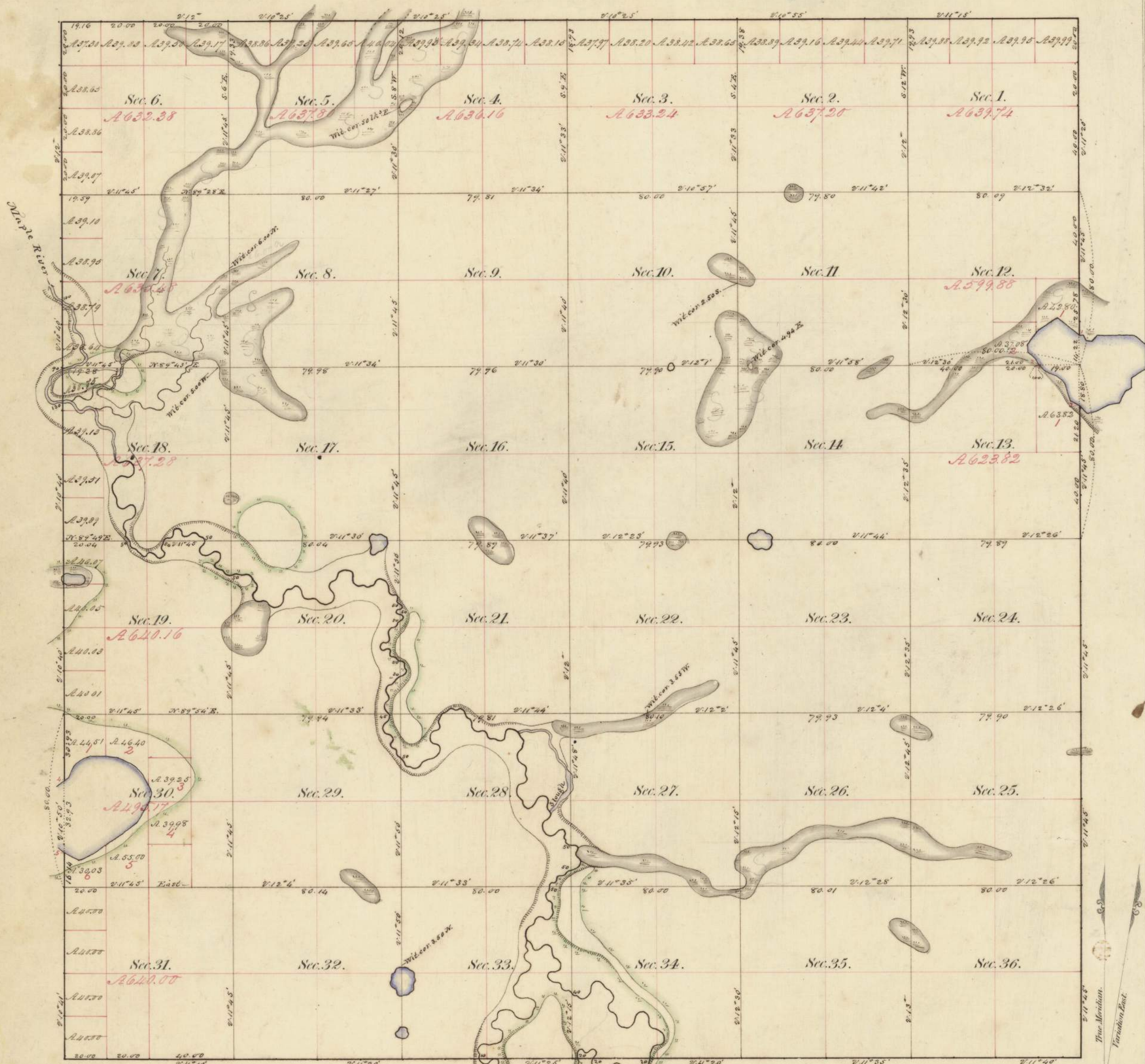


Township N^o 105 N., Range N^o 26 West of the 5th Mer.



Total number of Acres 22808.31

Manders of Lakes.					
Posts	Courses	Ch. ^s Lk. ^s	Posts	Courses	Ch. ^s Lk. ^s
Lake in Sec. 12 & 13					
1	N. 53 ¹ / ₂ W.	12.35			
	S. 63 ¹ / ₂ W.	10.00			
	S. 31 ¹ / ₂ W.	9.00			
	S. 6 ¹ / ₂ E.	3.50			
	S. 44 ¹ / ₂ E.	5.00			
2	N. 23 ¹ / ₂ E.	3.00			
	S. 40 ¹ / ₂ E.	6.00			
	S. 71 ¹ / ₂ E.	6.50			
	S. 51 ¹ / ₂ E.	4.50			
	S. 14 ¹ / ₂ E.	8.00			
3	S. 62 ¹ / ₂ E.	4.90			
Lake in Section 30					
4	N. 45 ¹ / ₂ E.	1.50			
	N. 33 ¹ / ₂ E.	7.00			
	N. 53 ¹ / ₂ E.	2.00			
	N. 59 ¹ / ₂ E.	5.00			
	N. 74 ¹ / ₂ E.	2.50			
	N. 88 ¹ / ₂ E.	6.50			
	S. 84 ¹ / ₂ E.	6.00			
	S. 65 ¹ / ₂ E.	6.50			
	S. 55 ¹ / ₂ E.	5.00			
	S. 37 ¹ / ₂ E.	5.00			
	S. 29 ¹ / ₂ E.	6.50			
	S. 10 ¹ / ₂ W.	3.00			
	S. 19 ¹ / ₂ W.	4.00			
	S. 35 ¹ / ₂ W.	10.00			
	S. 53 ¹ / ₂ W.	24.00			
	N. 68 ¹ / ₂ W.	7.00			
5	N. 57 ¹ / ₂ W.	3.77			
	N. 1 ¹ / ₂ E.	1.25			
Total		2.2			0.7

Surveys Designated.	By Whom Surveyed	Date of Contract.	Amount of Surveys M. Ch. ^s Lk. ^s	When Surveyed.	When Changed in the Sur. Gen. ^l Acc ^t
Township lines.	John Ball	June 20 th 1854	23. 79. 16	July, 1854	
Subdivisions.	John T. Everett	Sept. 26 th 1854	61. 68. 74	October, 1854	

The above Map of Township N. 105 N. of Range N. 26 West, 5th Principal Meridian, Minnesota, is strictly conformable to the field notes of the survey thereof on file in this Office which have been examined and approved.
 Surveyor General's Office
 Dubuque, April 10th 1855
 Warner Lewis
 Sur. Gen.